

DNA Tribes® SNP Admixture Results by Population

March 12, 2012

Introduction

This document lists population admixture results for the 7 continental zones and 21 world regions identified by DNA Tribes® SNP analysis as of March 12, 2012. DNA Tribes® SNP analysis is performed based on proprietary statistical algorithms not available elsewhere. For this reason, DNA Tribes® SNP results can differ from other admixture analyses using similar reference samples.

These admixture components express the relative geographical relationships between SNP samples in our database. However, these genetic components can cross perceived ethnic and cultural barriers to express more ancient migrations and patterns of trade and contact between world populations.

Table of Contents

Introduction.....	1
Admixture Analysis: 7 Continental Zones.....	3
7 Continents Admixture: African Populations (Part 1)	4
7 Continents Admixture: African Populations (Part 2)	5
7 Continents Admixture: African Populations (Part 3)	6
7 Continents Admixture: Caucasus Mountains Populations.....	7
7 Continents Admixture: East Asian Populations.....	8
7 Continents Admixture: European Populations (Part 1)	9
7 Continents Admixture: European Populations (Part 2)	10
7 Continents Admixture: Middle Eastern Populations	11
7 Continents Admixture: Native American and Latino Populations	12
7 Continents Admixture: North Asian Populations.....	13
7 Continents Admixture: Oceanian Populations.....	14
7 Continents Admixture: South Asian Populations (Part 1).....	15
7 Continents Admixture: South Asian Populations (Part 2).....	16
7 Continents Admixture: South Asian Populations (Part 3).....	17

Admixture Analysis: 21 World Regions 18

 Description of World Regions 19

 Neighbor-Joining Tree of World Regions 20

 21 Regions Admixture: African Populations (Part 1) 21

 21 Regions Admixture: African Populations (Part 2) 22

 21 Regions Admixture: African Populations (Part 3) 23

 21 Regions Admixture: Caucasus Mountains Populations 24

 21 Regions Admixture: East Asian Populations 25

 21 Regions Admixture: European Populations (Part 1) 26

 21 Regions Admixture: European Populations (Part 2) 27

 21 Regions Admixture: Middle Eastern Populations 28

 21 Regions Admixture: Native American and Latino Populations 29

 21 Regions Admixture: North Asian Populations..... 30

 21 Regions Admixture: Oceanian Populations..... 31

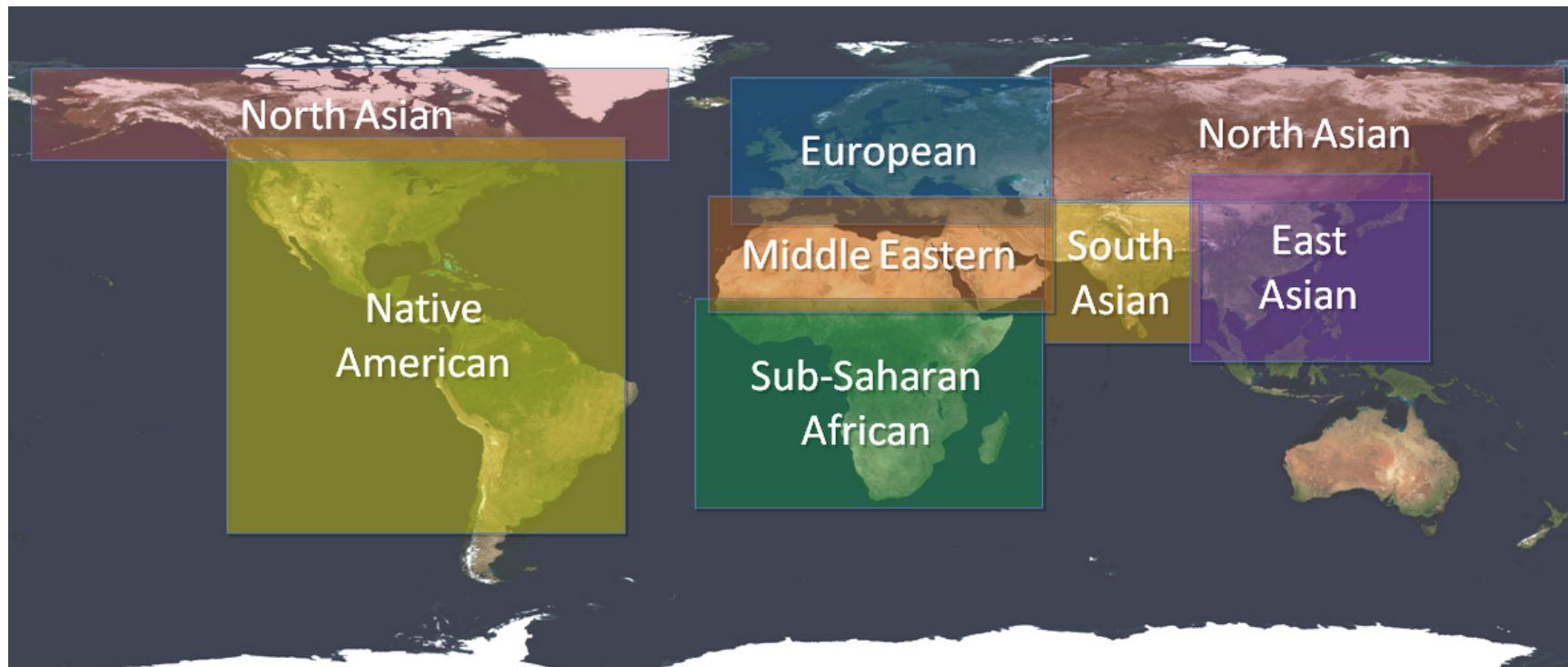
 21 Regions Admixture: South Asian Populations (Part 1)..... 32

 21 Regions Admixture: South Asian Populations (Part 2)..... 33

 21 Regions Admixture: South Asian Populations (Part 3)..... 34

Admixture Analysis: 7 Continental Zones

The first group of admixture tables is based on the 7 continental zones (illustrated in the map below). Each continental zone can include multiple cultures and languages and cross perceived boundaries between modern nations and ethnic groups. Admixture results below are based on whole populations. Individual results will vary based on what genetic material each person has inherited and the genetic variation within each population.



7 Continents Admixture: African Populations (Part 1)

Population	Native American	Sub-Saharan African	European	Middle Eastern	South Asian	East Asian	North Asian
African-American Southwest USA	3.6%	77.9%	17.8%	-	0.2%	0.5%	-
Aka Central African Republic	-	100.0%	-	-	-	-	-
Bambara West Africa	-	100.0%	-	-	-	-	-
Bamoun Cameroon	-	100.0%	-	-	-	-	-
Bantu Kenya	0.2%	96.0%	-	3.3%	-	-	0.5%
Brong	-	100.0%	-	-	-	-	-
Dogon West Africa	-	100.0%	-	-	-	-	-
Fang Cameroon	-	100.0%	-	-	-	-	-
Fulani Nigeria	-	73.1%	-	26.6%	-	-	0.3%
Hausa Nigeria	-	100.0%	-	-	-	-	-
Herero South Africa	-	100.0%	-	-	-	-	-
Igbo Nigeria	-	100.0%	-	-	-	-	-
Kaba Chad	-	100.0%	-	-	-	-	-
Kongo	-	100.0%	-	-	-	-	-
Luhya Kenya	-	97.9%	-	1.2%	0.3%	0.7%	-
Mada Cameroon	0.2%	99.7%	-	-	-	0.2%	-
Mandenka Senegal	0.1%	99.8%	-	0.1%	-	-	-
Ovambo South Africa	-	99.9%	-	-	-	-	0.1%
Yoruba Ibadan Nigeria	-	100.0%	-	-	-	-	-

7 Continents Admixture: African Populations (Part 2)

Population	Native American	Sub-Saharan African	European	Middle Eastern	South Asian	East Asian	North Asian
Alur East-Central Africa	-	98.7%	-	-	0.7%	0.6%	-
Amhara Ethiopia	-	31.2%	-	68.5%	-	0.3%	-
Bulala Chad	-	94.0%	-	5.7%	-	0.4%	-
Hadza Tanzania	0.1%	90.2%	-	6.2%	2.9%	0.6%	-
Hema East-Central Africa	-	81.8%	-	17.2%	-	1.0%	-
Jewish Ethiopia	-	35.1%	-	64.9%	-	-	-
Khomani San South Africa	0.9%	97.6%	-	-	0.2%	-	1.2%
Kung Kalahari Desert	0.1%	99.9%	-	-	-	-	-
Maasai Kinyawa Kenya	-	70.8%	-	28.3%	-	0.9%	-
Mbuti East-Central Africa	-	100.0%	-	-	-	-	-
Nguni South Africa	-	100.0%	-	-	-	-	-
Oromo Ethiopia	-	49.4%	-	50.5%	-	0.1%	-
Pedi South Africa	-	100.0%	-	-	-	-	-
San Namibia	0.1%	99.9%	-	-	-	-	-
Sandawe Tanzania	-	80.9%	-	17.7%	-	1.4%	-
Somalia	-	45.2%	-	54.5%	-	0.2%	-
Sotho South Africa	-	100.0%	-	-	-	-	-
Tigray Ethiopia	-	31.1%	-	68.9%	-	-	-
Tswana South Africa	-	100.0%	-	-	-	-	-
Xhosa	-	100.0%	-	-	-	-	-

7 Continents Admixture: African Populations (Part 3)

Population	Native American	Sub-Saharan African	European	Middle Eastern	South Asian	East Asian	North Asian
African Qatar	0.5%	60.6%	-	29.7%	9.2%	-	-
Algeria	-	2.8%	-	97.2%	-	-	-
Egypt 1	-	0.9%	-	98.3%	0.8%	-	-
Egypt 2	-	-	11.6%	87.5%	0.9%	-	-
Jewish Morocco	-	-	47.0%	53.0%	-	-	-
Libya	-	-	-	100.0%	-	-	-
Morocco	-	12.1%	-	87.9%	-	-	-
Mozabite Algeria-Mزاب	-	9.3%	-	90.7%	-	-	-
North Morocco	-	-	4.0%	96.0%	-	-	-
Saharawi	-	8.4%	-	91.6%	-	-	-
South Morocco	-	27.4%	-	72.6%	-	-	-
Tunisia	-	-	-	100.0%	-	-	-

7 Continents Admixture: Caucasus Mountains Populations

Population	Native American	Sub-Saharan African	European	Middle Eastern	South Asian	East Asian	North Asian
Abkhazian	-	-	65.5%	22.0%	12.5%	-	-
Adyghe North Caucasus	-	-	71.7%	13.1%	15.3%	-	-
Armenian	-	-	58.5%	34.4%	7.1%	-	-
Balkar	-	-	68.6%	14.4%	14.7%	-	2.2%
Chechen	-	-	72.2%	12.9%	14.9%	-	-
Dargin Urkarah Dagestan	-	-	76.1%	6.0%	17.9%	-	-
Georgia Caucasus	-	-	65.1%	26.0%	8.9%	-	-
Kumyk	0.4%	-	66.4%	14.2%	17.2%	-	1.9%
Lezgin Caucasus	-	-	72.4%	11.7%	15.9%	-	-
Nogay	0.3%	-	58.9%	9.4%	11.9%	6.2%	13.3%
North Ossetia	-	-	66.1%	15.9%	15.6%	-	2.4%
Tajik	1.9%	-	49.8%	6.5%	33.0%	0.6%	8.2%
Turkey	-	-	59.3%	26.5%	12.8%	-	1.4%
Turkmen	0.3%	-	43.5%	17.6%	26.1%	3.7%	8.8%

7 Continents Admixture: East Asian Populations

Population	Native American	Sub-Saharan African	European	Middle Eastern	South Asian	East Asian	North Asian
Burma	-	0.4%	-	-	22.8%	75.8%	1.0%
Cambodia	-	1.7%	-	-	13.2%	85.1%	-
Chinese Singaporean	-	-	-	-	-	100.0%	-
Chinese-American Denver CO	-	-	-	-	-	100.0%	-
Dai China	-	0.5%	-	-	-	99.5%	-
Han Beijing China	-	-	-	-	-	100.0%	-
Han Southern China	-	-	-	-	-	100.0%	-
Iban Borneo	-	1.4%	-	-	6.8%	91.8%	-
Japan	0.4%	-	-	-	-	87.7%	11.9%
Lahu China	-	1.0%	-	-	1.2%	97.8%	-
Malay Singaporean	-	1.3%	-	-	15.6%	83.0%	-
Miao China	-	-	-	-	-	100.0%	-
Monguor China	1.0%	0.7%	1.5%	1.1%	1.3%	79.7%	14.6%
Naga India	0.8%	0.8%	-	-	-	85.9%	12.6%
Naxi China	0.5%	0.4%	-	-	0.1%	90.7%	8.3%
She China	-	-	-	-	-	100.0%	-
Thailand	-	2.0%	-	-	22.3%	75.7%	-
Tujia China	-	-	-	-	-	100.0%	-
Uyghur China	1.4%	-	30.1%	2.3%	17.6%	26.9%	21.7%
Vietnam	-	0.1%	-	-	0.5%	99.4%	-
Yi China	0.7%	0.6%	-	-	-	93.7%	5.0%

7 Continents Admixture: European Populations (Part 1)

Population	Native American	Sub-Saharan African	European	Middle Eastern	South Asian	East Asian	North Asian
Basque France	-	-	96.6%	3.4%	-	-	-
Basque Spain	-	-	98.8%	1.2%	-	-	-
Belarus	0.3%	-	99.7%	-	-	-	-
Bergamo Italy	-	-	85.9%	14.1%	-	-	-
Bulgaria	-	-	92.4%	7.6%	-	-	-
Canary Islands	-	-	67.1%	32.9%	-	-	-
Chuvash Russian Federation	2.0%	-	75.2%	-	-	-	22.9%
Cornwall West Britain	-	-	100.0%	-	-	-	-
England	-	-	100.0%	-	-	-	-
European-American Utah	-	-	100.0%	-	-	-	-
Finland	1.0%	-	94.8%	-	-	-	4.2%
France	-	-	98.6%	1.4%	-	-	-
Galicia Spain	-	-	82.9%	17.1%	-	-	-
Germany and Netherlands	-	-	100.0%	-	-	-	-

7 Continents Admixture: European Populations (Part 2)

Population	Native American	Sub-Saharan African	European	Middle Eastern	South Asian	East Asian	North Asian
Hungary	-	-	100.0%	-	-	-	-
Lithuania	-	-	100.0%	-	-	-	-
Mordvin	1.5%	-	93.3%	-	-	-	5.3%
Orkney Islands Scotland	-	-	100.0%	-	-	-	-
Poland mixed	-	-	100.0%	-	-	-	-
Romania	-	-	86.2%	10.9%	2.9%	-	-
Russia	1.5%	-	93.6%	-	-	-	4.9%
Sardinia	-	-	73.3%	26.7%	-	-	-
Scandinavia	-	-	100.0%	-	-	-	-
Slovenia	-	-	100.0%	-	-	-	-
Southern Italian and Sicilian	-	-	67.5%	32.5%	-	-	-
Southwest Scotland	-	-	100.0%	-	-	-	-
Spain	-	-	88.6%	11.4%	-	-	-
Tuscany Italy	-	-	80.5%	19.5%	-	-	-
Ukraine	-	-	100.0%	-	-	-	-

7 Continents Admixture: Middle Eastern Populations

Population	Nat. Amer.	Sub-Sah. African	European	Middle Eastern	South Asian	East Asian	North Asian
Arab Qatar	-	-	10.6%	85.7%	3.7%	-	-
Ashkenazi Jewish Europe	-	-	66.3%	33.7%	-	-	-
Bedouin Negev Desert	-	-	11.3%	87.9%	0.8%	-	-
Cyprus	-	-	54.7%	45.3%	-	-	-
Druze Israel-Carmel	-	-	46.5%	50.9%	2.6%	-	-
Iran	-	-	39.4%	39.7%	20.9%	-	-
Jewish Azerbaijan	-	-	50.3%	41.4%	8.2%	-	-
Jewish Georgia	-	-	48.3%	47.8%	3.9%	-	-
Jewish Iran	-	-	42.4%	45.7%	11.9%	-	-
Jewish Iraq	-	-	42.7%	50.9%	6.4%	-	-
Jewish Uzbekistan	-	-	49.2%	41.5%	9.2%	-	-
Jewish Yemen	-	-	16.1%	83.9%	-	-	-
Jordan	-	-	25.6%	68.8%	5.7%	-	-
Kurdish	-	-	50.7%	34.0%	15.3%	-	-
Lebanon	-	-	37.0%	57.2%	5.8%	-	-
Palestinian Israel	-	-	26.3%	70.7%	3.0%	-	-
Persian and South Asian Qatar	-	-	23.6%	37.9%	38.5%	-	-
Samaritan	-	-	29.0%	69.9%	1.1%	-	-
Saudi Arabia	-	-	12.2%	85.2%	2.7%	-	-
Sephardic Jewish Bulgaria	-	-	57.6%	42.4%	-	-	-
Sephardic Jewish Turkey	-	-	51.0%	49.0%	-	-	-
Syria	-	-	37.1%	56.5%	6.4%	-	-
Yemen	0.1%	9.2%	-	82.1%	8.4%	-	0.2%

7 Continents Admixture: Native American and Latino Populations

Population	Native American	Sub-Saharan African	European	Middle Eastern	South Asian	East Asian	North Asian
Aleut Alaska	11.6%	-	66.0%	-	-	-	22.5%
Amerindian Colombia	99.4%	0.6%	-	-	-	-	-
Aymara La Paz Bolivia	94.3%	0.0%	3.9%	1.8%	-	-	-
Colombia	31.9%	8.3%	43.8%	16.0%	-	-	-
Dominican Republic	6.7%	38.9%	38.2%	16.1%	-	-	-
Eastern Greenland	34.7%	-	10.9%	-	-	-	54.3%
Ecuador	49.6%	4.1%	31.6%	11.7%	-	2.1%	0.8%
Karitiana Brazil	100.0%	-	-	-	-	-	-
Maya Mexico	91.4%	0.7%	1.9%	2.4%	1.3%	0.6%	1.7%
Mexican-American Los Angeles CA	46.8%	1.5%	35.8%	13.7%	-	0.7%	1.5%
Pima Mexico	91.9%	0.7%	0.7%	-	0.5%	1.7%	4.4%
Puerto Rico	13.5%	18.5%	44.6%	23.5%	-	-	-
Surui Brazil	100.0%	-	-	-	-	-	-
Totonac Mexico	97.0%	-	1.0%	0.6%	-	0.8%	0.5%
Western Greenland	26.1%	-	27.5%	-	0.5%	-	45.9%

7 Continents Admixture: North Asian Populations

Population	Native American	Sub-Saharan African	European	Middle Eastern	South Asian	East Asian	North Asian
Altai Russian Federation	2.3%	0.1%	16.7%	-	5.4%	16.5%	59.0%
Buryat	-	-	0.7%	1.6%	1.4%	26.0%	70.4%
Chukchi Russian Federation	17.3%	-	4.4%	-	-	-	78.3%
Daur China	-	-	-	-	-	56.9%	43.1%
Dolgan Russian Federation	-	-	10.6%	-	1.4%	-	88.0%
Evenk Russian Federation	-	-	-	-	-	-	100.0%
Hazara Pakistan	0.4%	-	26.1%	3.9%	22.0%	21.8%	25.8%
Hezhen China	-	-	-	-	-	58.9%	41.1%
Ket Russian Federation	3.5%	-	20.6%	-	-	-	75.8%
Koryak Russian Federation	9.6%	-	-	-	-	-	90.4%
Kyrgyz	0.5%	-	21.4%	1.4%	8.0%	26.7%	42.1%
Mongol Mongolia	0.8%	0.1%	11.0%	1.7%	0.8%	31.3%	54.3%
Mongola China	0.4%	-	-	0.7%	-	62.9%	36.0%
Nganasan Russian Federation	-	-	-	-	-	-	100.0%
Oroqen China	-	-	-	-	-	32.5%	67.5%
Selkup Russian Federation	3.3%	-	29.7%	-	-	-	67.0%
Tuvinians Russian Federation	-	-	5.6%	-	0.7%	15.0%	78.7%
Uzbek Central Asia	0.8%	-	38.2%	4.6%	18.2%	14.5%	23.8%
Xibo China	-	-	1.1%	-	-	72.2%	26.6%
Yakut Siberia	-	-	-	-	-	-	100.0%
Yukaghir Russian Federation	-	-	-	-	-	-	100.0%



© 2006-2012 DNA Tribes. DNA Tribes®.
DNA Tribes genetic ancestry analysis is available
exclusively from DNA Tribes. All rights reserved.
Satellite images courtesy NASA Earth Observatory.

7 Continents Admixture: Oceanian Populations

Population	Native American	Sub-Saharan African	European	Middle Eastern	South Asian	East Asian	North Asian
Melanesian Bougainville	-	8.9%	-	-	43.0%	48.1%	-
Papuan New Guinea	-	10.2%	-	-	54.0%	35.8%	-
Samoa	-	3.2%	-	-	11.7%	85.1%	-
Tonga	-	4.2%	-	-	12.9%	82.9%	-

7 Continents Admixture: South Asian Populations (Part 1)

Population	Native American	Sub-Saharan African	European	Middle Eastern	South Asian	East Asian	North Asian
Lambadi India	-	-	1.2%	3.0%	95.8%	-	-
Bengali India	-	0.1%	-	-	97.5%	2.4%	-
Chamar India	-	-	-	-	100.0%	-	-
Chenchu India	-	-	-	-	98.4%	1.6%	-
Dalit Tamil Nadu India	-	-	-	-	100.0%	-	-
Dharkar India	-	0.1%	3.3%	-	96.5%	-	-
Dusadh India	-	-	-	-	100.0%	-	-
Hakkipikki India	-	-	-	-	99.8%	0.2%	-
Irula South India	-	-	-	-	98.1%	1.9%	-
Kanjar India	-	-	2.4%	-	97.6%	-	-
Kol India	-	-	-	-	100.0%	-	-
Kurumba India	-	-	-	-	100.0%	-	-
Madiga Andhra Pradesh India	-	-	-	-	100.0%	-	-
Mala Andhra Pradesh India	-	-	-	-	100.0%	-	-
North Kannadi India	-	-	-	-	100.0%	-	-
Piramalai Kallar India	-	-	-	-	100.0%	-	-
Sakilli India	-	-	-	-	100.0%	-	-
Scheduled Caste Tamil Nadu India	-	-	-	-	100.0%	-	-
Scheduled Caste Uttar Pradesh India	-	-	-	-	100.0%	-	-
Velama India	-	-	-	-	100.0%	-	-

7 Continents Admixture: South Asian Populations (Part 2)

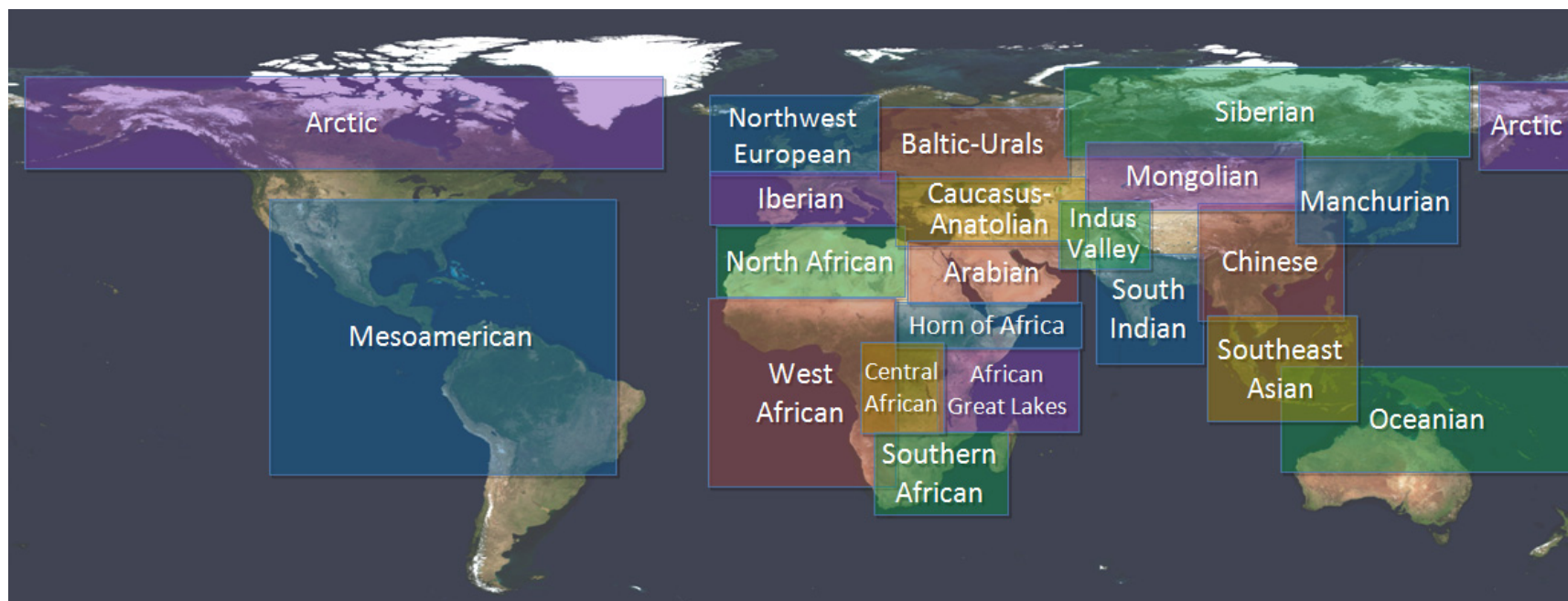
Population	Native American	Sub-Saharan African	European	Middle Eastern	South Asian	East Asian	North Asian
Arain Punjab Pakistan	-	-	25.0%	3.8%	71.2%	-	-
Balochi Pakistan	-	-	30.8%	18.0%	51.2%	-	-
Brahmin Andhra Pradesh India	-	-	8.5%	-	91.5%	-	-
Brahmin Tamil Nadu India	-	-	9.0%	2.0%	89.0%	-	-
Brahmin Uttar Pradesh India	-	-	17.8%	-	82.2%	-	-
Brahui Pakistan	-	-	28.8%	22.3%	48.9%	-	-
Burusho Pakistan	1.6%	-	28.8%	1.7%	63.2%	-	4.7%
Gujarat India	-	-	5.4%	-	94.6%	-	-
Kalash Pakistan	-	-	43.4%	-	56.6%	-	-
Kshatriya Uttar Pradesh India	-	-	13.7%	0.7%	85.6%	-	-
Kurmi India	0.2%	-	3.4%	-	96.4%	-	-
Makrani Pakistan	-	1.3%	24.2%	28.0%	46.4%	-	-
Meena India	-	-	16.0%	-	84.0%	-	-
Meghawal India	-	-	-	1.1%	98.9%	-	-
Muslim Uttar Pradesh India	-	-	1.9%	-	98.1%	-	-
Pashtun Pakistan	-	-	36.6%	3.2%	60.2%	-	-
Sindhi Pakistan	-	0.8%	21.6%	10.2%	67.4%	-	-
Tajik	1.9%	-	49.8%	6.5%	33.0%	0.6%	8.2%
Tharu India	-	0.2%	2.5%	-	97.3%	-	-
Turkmen	0.3%	-	43.5%	17.6%	26.1%	3.7%	8.8%

7 Continents Admixture: South Asian Populations (Part 3)

Population	Native American	Sub-Saharan African	European	Middle Eastern	South Asian	East Asian	North Asian
Asur Jharkand India	-	-	-	-	82.8%	17.2%	-
Bhunja India	-	0.6%	-	-	78.0%	21.4%	-
Bonda Orissa India	-	0.5%	-	-	64.8%	34.6%	-
Brahmin Uttaranchal India	1.6%	-	5.6%	0.2%	64.4%	20.5%	7.8%
Dhurwa India	-	-	-	-	79.1%	20.9%	-
Gadaba Orissa India	-	1.1%	-	-	68.2%	30.6%	-
Garo Meghalaya India	0.2%	1.3%	-	-	19.0%	79.6%	-
Gond India	-	-	-	-	95.0%	5.0%	-
Ho Bihar India	-	0.4%	-	-	74.2%	25.4%	-
Juang Orissa India	-	-	-	-	66.2%	33.8%	-
Kharia Chattishgarh India	-	0.7%	-	-	69.6%	29.7%	-
Khasi Meghalaya India	-	0.4%	-	-	41.2%	58.3%	-
Malayan India	-	0.7%	-	-	93.0%	6.3%	-
Mawasi India	-	-	-	-	79.2%	20.8%	-
Nepal	1.2%	0.3%	13.2%	-	63.5%	17.3%	4.6%
Nihali India	-	-	-	-	92.4%	7.6%	-
Paniya India	-	0.3%	-	-	91.2%	8.5%	-
Pulliyar India	-	-	-	-	93.0%	7.0%	-
Santhal Jharkand India	-	-	-	-	81.5%	18.5%	-
Savara Orissa India	-	-	-	-	73.2%	26.8%	-

Admixture Analysis: 21 World Regions

The second group of admixture tables is based on the 21 world regions (illustrated in the map below). Each genetic region can include multiple cultures and languages and cross perceived boundaries between modern countries and ethnic groups (see next page for more detailed descriptions). Admixture results below are based on whole populations. Individual results will vary based on what genetic material each person has inherited and the genetic variation within each population.



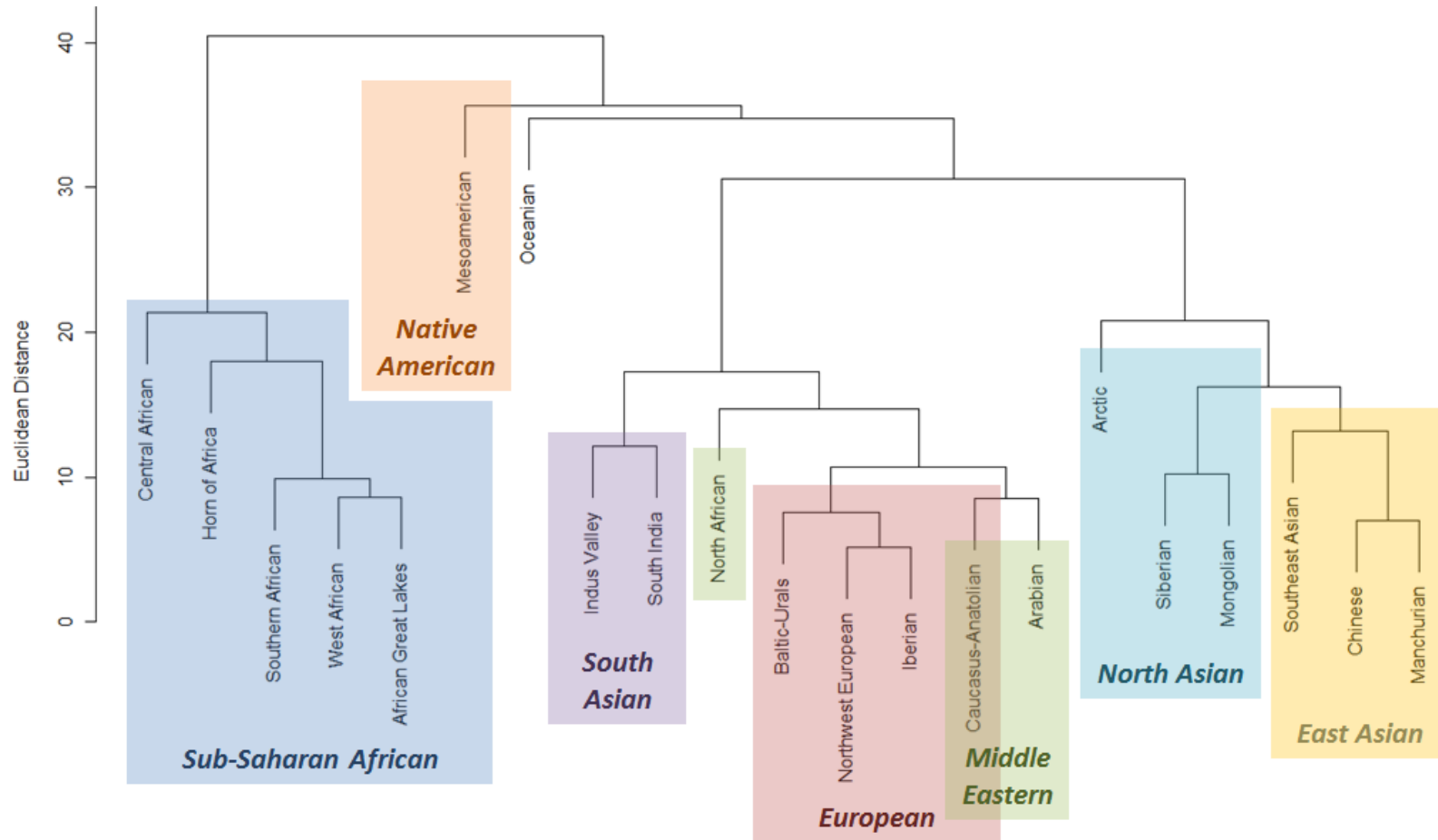
Description of World Regions

More detailed descriptions of the 21 world regions are included below. These regions have been identified by DNA Tribes® proprietary statistical analysis to provide the most detailed and representative comparison of your DNA to world population structure.

World Region	Description of World Region	Other Populations Related to Region
African Great Lakes	Eastern Africa.	Central and Southern Africa.
Arabian	The Arabian Peninsula; Egypt; the Levant.	Southwest Asia; North Africa; Southern Europe.
Arctic	Far East Siberians; Inuit (Eskimo) populations of North America.	Other North American Indians; Northern Asia.
Baltic-Urals	Northeastern Europe between the Baltic Sea and Ural Mountains.	Central and Northern Europe; Siberia.
Caucasus-Anatolian	The Caucasus Mountains, Anatolia, and highland Southwest Asia.	The Levant; Southeastern Europe; Central Asia.
Central African	Khoisan of Southern Africa; Mbuti and Aka of Central Africa.	
Chinese	China.	Southeast Asia; Far Eastern India; Central Asia.
Horn of Africa	Somalia; Ethiopia; Maasai.	The Red Sea; Northern Africa.
Iberian	Basques; the Iberian Peninsula; the Mediterranean Sea.	The Balkan Peninsula; Western Europe.
Indus Valley	The Indus River Valley; Punjab; Western Himalayas.	Northern India; Central Asia; Southwest Asia.
Manchurian	Tungusic, Japanese and Korean populations near the Sea of Japan.	Northern Chinese populations.
Mesoamerican	Indigenous populations of North, Central and South America.	
Mongolian	Mongolic and Turkic populations of South Siberia.	Western Siberia; Central Asia.
North African	The Maghreb and Sahara Desert.	Southwestern Europe.
Northwest European	The British Isles; Western Europe; Scandinavia.	Throughout Continental Europe.
Oceanian	Melanesian populations of the Pacific Ocean.	Polynesian populations.
Siberian	Indigenous populations of Northern Siberia.	Western Siberia.
South India	Southern and Eastern India.	Northern India; Southeast Asia.
Southeast Asian	Southeast Asia; the Malay Archipelago.	Eastern India; Polynesia; Southern China.
Southern African	Bantu speaking populations of Southeastern Africa.	Western Africa.
West African	Western Africa.	

Neighbor-Joining Tree of World Regions

The neighbor joining tree below illustrates relationships between the 21 world regions based on Euclidean distance. Closely related regions connect towards the bottom of the diagram: for instance, the two most similar regions are the Northwest European and Iberian regions. Middle Eastern regions (highlighted in green) include the Arabian and North African regions. The Caucasus-Anatolian region is related to both European and Middle Eastern regions.



21 Regions Admixture: African Populations (Part 1)

Population	West African	African Great Lakes	Central African	Southern African	North African	Northwest European	Horn of Africa	Meso-american	Baltic-Urals	Iberian	Other
African-American S.W. USA	61.3%	9.2%	0.3%	5.4%	1.9%	11.6%	-	3.2%	2.6%	2.0%	2.5%
Aka Central African Republic	32.2%	9.6%	58.2%	-	-	-	-	-	-	-	-
Bambara West Africa	95.6%	1.2%	-	-	-	-	3.0%	-	-	-	0.2%
Bamoun Cameroon	85.5%	2.8%	-	11.7%	-	-	-	-	-	-	-
Bantu Kenya	24.3%	60.2%	-	10.1%	-	-	5.4%	-	-	-	-
Brong	100.0%	-	-	-	-	-	-	-	-	-	-
Dogon West Africa	96.5%	-	-	-	1.0%	-	2.3%	0.2%	-	-	-
Fang Cameroon	78.3%	7.2%	3.5%	11.0%	-	-	-	-	-	-	-
Fulani Nigeria	53.9%	12.6%	-	-	24.6%	-	8.0%	-	-	-	0.9%
Hausa Nigeria	99.6%	-	-	-	-	-	-	-	-	-	0.4%
Herero South Africa	54.2%	18.7%	6.3%	20.8%	-	-	-	-	-	-	-
Igbo Nigeria	100.0%	-	-	-	-	-	-	-	-	-	-
Kaba Chad	97.0%	0.8%	0.4%	0.2%	-	-	0.8%	0.1%	-	-	0.7%
Kongo	78.5%	-	-	21.5%	-	-	-	-	-	-	-
Luhya Kenya	17.8%	77.5%	-	4.7%	-	-	-	-	-	-	-
Mada Cameroon	48.4%	51.6%	-	-	-	-	-	-	-	-	-
Mandenka Senegal	90.4%	4.1%	0.2%	-	1.3%	-	4.0%	-	-	-	-
Ovambo South Africa	64.4%	16.7%	2.8%	13.8%	0.5%	-	1.3%	-	-	-	0.6%
Yoruba Ibadan Nigeria	100.0%	-	-	-	-	-	-	-	-	-	-

21 Regions Admixture: African Populations (Part 2)

Population	Central African	Horn of Africa	Southern African	African Great Lakes	Arabian	Northwest European	South India	Other
Alur East-Central Africa	3.7%	-	-	96.3%	-	-	-	-
Amhara Ethiopia	-	70.8%	-	-	29.2%	-	-	-
Bulala Chad	-	4.4%	-	95.1%	-	-	-	0.6%
Hadza Tanzania	8.6%	-	-	89.7%	-	-	1.2%	0.4%
Hema East-Central Africa	-	27.0%	-	72.1%	0.3%	-	-	0.6%
Jewish Ethiopia	-	77.2%	-	-	22.8%	-	-	-
Khomani San South Africa	98.2%	-	-	-	-	1.8%	-	-
Kung Kalahari Desert	73.5%	-	25.9%	-	-	0.2%	-	0.4%
Maasai Kinyawa Kenya	1.1%	65.0%	-	33.9%	-	-	-	-
Mbuti East-Central Africa	80.2%	-	-	19.8%	-	-	-	-
Nguni South Africa	-	-	100.0%	-	-	-	-	-
Oromo Ethiopia	-	100.0%	-	-	-	-	-	-
Pedi South Africa	-	-	99.2%	-	-	0.8%	-	-
San Namibia	100.0%	-	-	-	-	-	-	-
Sandawe Tanzania	4.8%	10.4%	-	77.3%	7.0%	-	-	0.5%
Somalia	-	92.1%	-	-	7.9%	-	-	-
Sotho South Africa	2.7%	-	97.3%	-	-	-	-	-
Tigray Ethiopia	-	69.9%	-	-	30.1%	-	-	-
Tswana South Africa	8.3%	-	91.4%	-	-	-	-	0.3%
Xhosa	2.7%	-	97.3%	-	-	-	-	-

21 Regions Admixture: African Populations (Part 3)

Population	North African	Arabian	Caucasus-Anatolian	Iberian	Horn of Africa	African Great Lakes	West African	Southern African	Indus Valley	South India	Other
African Qatar	-	16.7%	-	-	23.4%	28.7%	14.3%	7.5%	4.7%	3.8%	0.8%
Algeria	74.4%	19.6%	-	4.7%	-	-	0.9%	0.2%	-	-	0.2%
Egypt 1	0.8%	87.4%	-	-	11.4%	-	0.5%	-	-	-	-
Egypt 2	4.5%	93.5%	-	0.1%	1.5%	-	0.3%	-	-	-	-
Jewish Morocco	5.2%	45.4%	15.1%	34.3%	-	-	-	-	-	-	-
Libya	28.6%	67.1%	-	-	3.6%	-	0.6%	-	-	-	0.1%
Morocco	90.5%	-	-	-	5.8%	-	3.7%	-	-	-	-
Mozabite Algeria-Mzab	96.2%	-	-	-	0.6%	-	3.2%	-	-	-	-
North Morocco	77.6%	4.6%	-	17.8%	-	-	-	-	-	-	-
Saharawi	97.9%	-	-	-	-	0.5%	1.5%	-	-	-	-
South Morocco	77.9%	-	-	-	-	5.6%	16.5%	-	-	-	-
Tunisia	78.2%	6.6%	-	15.1%	-	-	-	-	-	-	-

21 Regions Admixture: Caucasus Mountains Populations

Populations	Caucasus-Anatolian	Indus Valley	Mongolian	Arabian	Baltic-Urals	Northwest European	Chinese	Manchurian	Arctic	Siberian	Other
Abkhazian	100.0%	-	-	-	-	-	-	-	-	-	-
Adyghe North Caucasus	93.6%	3.1%	1.3%	-	2.0%	-	-	-	-	-	-
Armenian	87.2%	-	-	12.8%	-	-	-	-	-	-	-
Balkar	92.3%	2.6%	3.9%	-	1.0%	-	0.1%	-	-	-	0.1%
Chechen	84.6%	9.6%	-	-	5.8%	-	-	-	-	-	-
Dargin Urkarah Dagestan	70.9%	17.5%	-	-	11.6%	-	-	-	-	-	-
Georgia Caucasus	100.0%	-	-	-	-	-	-	-	-	-	-
Kumyk	81.2%	14.1%	2.4%	-	1.6%	-	-	-	0.2%	-	0.5%
Lezgin Caucasus	81.7%	14.2%	-	-	4.1%	-	-	-	-	-	-
Nogay	56.0%	8.8%	13.2%	-	11.7%	2.4%	2.2%	2.3%	1.4%	1.1%	0.9%
North Ossetia	91.4%	4.3%	4.3%	-	-	-	-	-	-	-	-
Turkey	88.1%	-	2.2%	7.8%	-	-	-	-	-	0.9%	0.9%
Turkmen	60.1%	21.9%	4.5%	-	-	-	2.9%	2.8%	-	3.5%	4.3%

21 Regions Admixture: East Asian Populations

Population	Chinese	Southeast Asian	Manchurian	Mongolian	Indus Valley	South India	Caucasus-Anatolian	Baltic-Urals	Other
Burma	55.1%	13.5%	-	9.0%	-	20.8%	-	-	1.6%
Cambodia	36.8%	54.6%	-	-	-	7.6%	-	-	1.0%
Chinese Singaporean	92.7%	7.3%	-	-	-	-	-	-	-
Chinese-American Denver CO	91.2%	1.6%	7.2%	-	-	-	-	-	-
Dai China	61.8%	38.2%	-	-	-	-	-	-	-
Han Beijing China	74.2%	-	25.8%	-	-	-	-	-	-
Han Southern China	100.0%	-	-	-	-	-	-	-	-
Iban Borneo	-	100.0%	-	-	-	-	-	-	-
Japan	8.5%	5.0%	85.3%	-	-	-	-	-	1.3%
Lahu China	71.7%	27.8%	-	-	-	-	-	-	0.5%
Malay Singaporean	8.8%	84.8%	-	-	-	5.8%	-	-	0.6%
Miao China	92.0%	8.0%	-	-	-	-	-	-	-
Monguor China	62.2%	-	10.6%	20.2%	3.6%	-	-	0.3%	3.1%
Naga India	58.8%	-	22.1%	15.9%	-	-	-	-	3.2%
Naxi China	80.4%	-	1.3%	15.9%	-	-	-	-	2.4%
She China	96.5%	3.5%	-	-	-	-	-	-	-
Thailand	33.1%	48.1%	-	-	0.4%	16.0%	-	-	2.4%
Tujia China	100.0%	-	-	-	-	-	-	-	-
Uyghur China	14.9%	-	6.4%	28.0%	22.3%	1.9%	14.9%	8.6%	3.1%
Vietnam	67.1%	32.9%	-	-	-	-	-	-	-
Yi China	74.7%	-	14.2%	8.7%	-	0.1%	-	-	2.3%

21 Regions Admixture: European Populations (Part 1)

Population	Baltic-Urals	Iberian	Northwest European	Caucasus-Anatolian	Arabian	North African	Mongolian	Indus Valley	Siberian	Arctic	Other
Basque France	-	100.0%	-	-	-	-	-	-	-	-	-
Basque Spain	-	100.0%	-	-	-	-	-	-	-	-	-
Belarus	73.4%	6.5%	17.8%	2.3%	-	-	-	-	-	-	-
Bergamo Italy	-	89.2%	-	9.5%	1.3%	-	-	-	-	-	-
Bulgaria	13.4%	63.3%	2.1%	21.3%	-	-	-	-	-	-	-
Canary Islands	1.9%	66.9%	7.3%	-	6.9%	17.1%	-	-	-	-	-
Chuvash Russian Federation	74.0%	-	-	-	-	-	9.9%	5.9%	5.8%	3.7%	0.7%
Cornwall West Britain	-	2.5%	94.0%	-	0.5%	0.7%	-	2.2%	-	-	-
England	-	2.1%	95.8%	-	-	0.4%	-	1.7%	-	-	-
European-American Utah	12.1%	14.9%	70.4%	-	-	-	-	2.6%	-	-	-
Finland	100.0%	-	-	-	-	-	-	-	-	-	-
France	1.9%	49.7%	46.5%	-	-	-	-	1.9%	-	-	-
Galicia Spain	5.7%	87.8%	-	-	-	6.4%	-	-	-	-	0.1%
Germany and Netherlands	-	-	98.3%	-	-	-	-	1.4%	-	-	0.2%

21 Regions Admixture: European Populations (Part 2)

Population	Baltic-Urals	Iberian	Northwest European	Caucasus-Anatolian	Arabian	North African	Mongolian	Indus Valley	Siberian	South India	Other
Hungary	23.4%	12.1%	52.1%	9.0%	2.1%	-	-	1.2%	-	-	-
Lithuania	100.0%	-	-	-	-	-	-	-	-	-	-
Mordvin	90.7%	-	-	4.0%	-	-	-	3.6%	1.1%	-	0.5%
Orkney Islands Scotland	1.6%	-	94.5%	-	-	0.1%	-	3.7%	-	-	0.1%
Poland mixed	48.7%	-	50.6%	0.7%	-	-	-	-	-	-	-
Romania	16.5%	33.1%	15.5%	25.3%	6.1%	-	-	1.4%	-	2.0%	0.1%
Russia	98.7%	-	-	-	-	-	-	-	0.7%	0.1%	0.5%
Sardinia	-	94.9%	-	-	1.9%	3.2%	-	-	-	-	-
Scandinavia	-	-	96.5%	-	-	-	1.0%	2.0%	-	-	0.5%
Slovenia	28.3%	22.6%	44.1%	5.1%	-	-	-	-	-	-	-
South Italian and Sicilian	-	57.9%	-	21.5%	20.6%	-	-	-	-	-	-
Southwest Scotland	0.3%	1.5%	91.2%	-	-	-	-	5.3%	-	-	1.7%
Spain	1.0%	98.7%	-	-	-	-	-	-	-	-	0.3%
Tuscany Italy	-	72.8%	-	19.2%	8.0%	-	-	-	-	-	-
Ukraine	68.5%	12.5%	13.5%	4.0%	1.5%	-	-	-	-	-	-

21 Regions Admixture: Middle Eastern Populations

Population	Arabian	North African	Caucasus-Anatolian	Iberian	Indus Valley	West African	Horn of Africa	African Great Lakes	South India	Southern African	Other
Arab Qatar	100.0%	-	-	-	-	-	-	-	-	-	-
Ashkenazi Jewish Europe	25.4%	-	34.4%	38.0%	-	-	-	-	-	-	2.1%
Bedouin Negev Desert	100.0%	-	-	-	-	-	-	-	-	-	-
Cyprus	36.0%	-	50.2%	13.7%	-	-	-	-	-	-	-
Druze Israel-Carmel	42.6%	-	56.2%	1.2%	-	-	-	-	-	-	-
Iran	28.7%	-	45.5%	-	25.8%	-	-	-	-	-	-
Jewish Azerbaijan	31.9%	-	66.5%	-	1.6%	-	-	-	-	-	-
Jewish Georgia	40.1%	-	59.9%	-	-	-	-	-	-	-	-
Jewish Iran	38.4%	-	53.9%	-	7.7%	-	-	-	-	-	-
Jewish Iraq	44.5%	-	55.5%	-	-	-	-	-	-	-	-
Jewish Uzbekistan	35.8%	-	59.3%	0.3%	4.7%	-	-	-	-	-	-
Jewish Yemen	100.0%	-	-	-	-	-	-	-	-	-	-
Jordan	65.3%	-	30.9%	-	-	-	3.8%	-	-	-	-
Kurdish	16.2%	-	69.1%	-	14.8%	-	-	-	-	-	-
Lebanon	48.7%	1.9%	47.5%	0.8%	-	-	1.2%	-	-	-	-
Palestinian Israel	79.8%	-	20.2%	-	-	-	-	-	-	-	-
Persian and South Asian Qatar	32.5%	-	15.5%	-	37.4%	-	-	1.8%	12.0%	0.1%	0.6%
Samaritan	78.4%	-	21.6%	-	-	-	-	-	-	-	-
Saudi Arabia	100.0%	-	-	-	-	-	-	-	-	-	-
Sephardic Jewish Bulgaria	36.1%	-	25.7%	38.2%	-	-	-	-	-	-	-
Sephardic Jewish Turkey	47.8%	-	20.6%	31.6%	-	-	-	-	-	-	-
Syria	53.9%	-	46.1%	-	-	-	-	-	-	-	-
Yemen	78.2%	-	-	-	-	3.0%	12.3%	-	1.7%	3.4%	1.4%

21 Regions Admixture: Native American and Latino Populations

Population	Meso-american	Arctic	Baltic-Urals	Iberian	West African	Northwest European	Arabian	Caucasus-Anatolian	African Great Lakes	North African	Other
Aleut Alaska	6.3%	24.6%	44.0%	-	0.2%	16.7%	-	2.6%	-	-	5.5%
Amerindian Colombia	99.3%	-	-	-	-	-	-	-	-	-	0.7%
Aymara La Paz Bolivia	94.4%	-	-	2.4%	-	1.6%	1.4%	-	0.3%	-	-
Colombia	32.4%	0.5%	1.3%	37.4%	5.9%	6.4%	3.6%	3.6%	1.4%	4.9%	2.6%
Dominican Republic	7.5%	-	3.0%	30.5%	30.2%	6.6%	2.6%	2.7%	4.4%	6.3%	6.3%
Eastern Greenland	10.8%	89.2%	-	-	-	-	-	-	-	-	-
Ecuador	49.5%	1.0%	3.1%	23.9%	2.2%	3.3%	3.1%	5.1%	-	2.8%	6.0%
Karitiana Brazil	100.0%	-	-	-	-	-	-	-	-	-	-
Maya Mexico	91.2%	0.9%	1.0%	-	0.5%	-	2.0%	0.3%	-	0.1%	4.0%
Mexican-American Los Angeles CA	46.5%	2.5%	3.3%	28.7%	0.8%	3.8%	5.8%	1.1%	-	3.0%	4.5%
Pima Mexico	90.7%	5.3%	0.9%	-	-	-	-	-	-	-	3.1%
Puerto Rico	14.2%	0.3%	4.0%	38.4%	14.7%	4.7%	12.7%	0.6%	-	4.7%	5.8%
Surui Brazil	100.0%	-	-	-	-	-	-	-	-	-	-
Totonac Mexico	96.7%	1.3%	-	0.9%	-	-	-	-	-	0.6%	0.6%
Western Greenland	7.6%	73.3%	-	0.8%	-	18.3%	-	-	-	-	-

21 Regions Admixture: North Asian Populations

Populations	Arctic	Mongolian	Siberian	Manch- -urian	Baltic- Urals	Indus Valley	Caucasus- Anatolian	Chinese	South India	Northwest European	Meso- american	Other
Altai Russian Federation	2.1%	75.2%	-	-	7.8%	8.5%	-	-	-	3.7%	2.5%	0.2%
Buryat	-	99.6%	-	-	-	-	-	-	-	-	-	0.4%
Chukchi Russian Federation	100.0%	-	-	-	-	-	-	-	-	-	-	-
Daur China	-	41.6%	-	58.4%	-	-	-	-	-	-	-	-
Dolgan Russian Federation	-	-	81.3%	-	12.3%	-	0.9%	-	4.1%	-	-	1.5%
Evenk Russian Federation	-	-	98.6%	-	-	-	-	-	-	0.5%	-	1.0%
Hazara Pakistan	-	27.2%	3.7%	6.7%	6.1%	24.0%	16.2%	10.5%	4.9%	0.1%	0.6%	0.1%
Hezhen China	1.3%	24.6%	-	74.1%	-	-	-	-	-	-	-	-
Ket Russian Federation	14.4%	22.5%	34.8%	-	24.6%	0.5%	-	-	-	-	3.3%	-
Koryak Russian Federation	100.0%	-	-	-	-	-	-	-	-	-	-	-
Kyrgyz	-	59.7%	-	-	6.6%	11.7%	7.0%	10.5%	-	3.4%	0.8%	0.3%
Mongol Mongolia	0.2%	77.5%	-	-	3.7%	0.6%	3.9%	9.4%	-	2.0%	1.3%	1.5%
Mongola China	0.2%	42.2%	-	34.4%	-	-	-	21.4%	-	-	0.8%	1.0%
Nganasan Russian Federation	5.7%	-	94.3%	-	-	-	-	-	-	-	-	-
Oroqen China	-	55.6%	14.6%	29.8%	-	-	-	-	-	-	-	-
Selkup Russian Federation	14.3%	20.6%	28.0%	-	30.9%	3.4%	-	-	-	-	2.8%	-
Tuvinians Russian Federation	-	95.9%	-	-	4.1%	-	-	-	-	-	-	-
Uzbek Central Asia	1.8%	24.2%	1.7%	6.4%	14.4%	21.7%	22.0%	4.7%	1.9%	-	0.6%	0.5%
Xibo China	-	10.9%	-	84.2%	2.5%	0.2%	1.5%	-	-	-	-	0.8%
Yakut Siberia	-	-	95.7%	-	-	0.3%	1.4%	0.5%	-	0.8%	-	1.2%
Yukaghir Russian Federation	19.1%	-	80.9%	-	-	-	-	-	-	-	-	-



© 2006-2012 DNA Tribes. DNA Tribes®.
DNA Tribes genetic ancestry analysis is available
exclusively from DNA Tribes. All rights reserved.
Satellite images courtesy NASA Earth Observatory.

21 Regions Admixture: Oceanian Populations

Population	Oceanian	Southeast Asian
Melanesian Bougainville	100.0%	-
Papuan New Guinea	100.0%	-
Samoa	32.5%	67.5%
Tonga	43.9%	56.1%

21 Regions Admixture: South Asian Populations (Part 1)

Population	South India	Indus Valley	Northwest European	North African	Iberian	Manchurian	Oceanian	Other
Lambadi India	75.0%	21.0%	-	3.4%	-	-	-	0.6%
Bengali India	77.8%	19.1%	-	-	-	2.2%	0.6%	0.4%
Chamar India	100.0%	-	-	-	-	-	-	-
Chenchu India	98.0%	0.1%	-	-	-	-	0.8%	1.1%
Dalit Tamil Nadu India	100.0%	-	-	-	-	-	-	-
Dharkar India	76.1%	19.5%	4.1%	-	-	-	-	0.4%
Dusadh India	89.0%	10.9%	0.2%	-	-	-	-	-
Hakkipikki India	99.5%	-	-	-	-	-	0.5%	-
Irula South India	98.5%	-	-	-	-	-	1.0%	0.5%
Kanjar India	77.4%	18.9%	0.4%	-	3.2%	-	-	0.1%
Kol India	95.9%	4.1%	-	-	-	-	-	-
Kurumba India	81.0%	18.6%	-	-	-	-	-	0.4%
Madiga Andhra Pradesh India	100.0%	-	-	-	-	-	-	-
Mala Andhra Pradesh India	100.0%	-	-	-	-	-	-	-
North Kannadi India	98.3%	-	-	-	-	-	0.9%	0.8%
Piramalai Kallar India	89.9%	9.8%	-	-	-	-	-	0.3%
Sakilli India	99.0%	-	-	-	-	-	-	1.0%
Scheduled Caste Tamil Nadu India	90.0%	10.0%	-	-	-	-	-	-
Scheduled Caste Uttar Pradesh India	83.7%	16.3%	-	-	-	-	-	-
Velama India	79.4%	20.6%	-	-	-	-	-	-

21 Regions Admixture: South Asian Populations (Part 2)

Population	South India	Indus Valley	Caucasus-Anatolian	Arabian	Baltic-Urals	Mongolian	Northwest European	Siberian	Other
Arain Punjab Pakistan	22.0%	78.0%	-	-	-	-	-	-	-
Balochi Pakistan	-	91.8%	-	7.7%	-	-	-	-	0.4%
Brahmin Andhra Pradesh India	63.8%	34.8%	-	-	-	-	1.4%	-	-
Brahmin Tamil Nadu India	58.4%	41.1%	-	-	-	-	0.4%	-	-
Brahmin Uttar Pradesh India	51.8%	41.3%	-	-	0.6%	-	6.3%	-	-
Brahui Pakistan	-	89.9%	-	8.8%	-	-	-	-	1.3%
Burusho Pakistan	16.4%	72.2%	-	-	3.2%	3.5%	-	-	4.6%
Gujarat India	64.3%	35.7%	-	-	-	-	-	-	-
Kalash Pakistan	-	100.0%	-	-	-	-	-	-	-
Kshatriya Uttar Pradesh India	56.9%	37.2%	-	-	-	-	5.5%	-	0.4%
Kurmi India	67.6%	32.1%	-	-	-	-	-	-	0.3%
Makrani Pakistan	-	82.3%	-	13.6%	-	-	-	-	4.1%
Meena India	51.0%	45.6%	-	-	-	-	2.2%	-	1.2%
Meghawal India	70.6%	29.4%	-	-	-	-	-	-	-
Muslim Uttar Pradesh India	76.2%	22.2%	-	-	-	-	1.7%	-	-
Pashtun Pakistan	1.7%	98.0%	-	-	-	-	-	0.1%	0.2%
Sindhi Pakistan	18.2%	79.1%	-	-	-	-	-	-	2.7%
Tajik	-	54.1%	22.7%	-	10.1%	7.1%	1.8%	-	4.1%
Tharu India	72.7%	26.7%	-	-	-	-	0.3%	-	0.4%

21 Regions Admixture: South Asian Populations (Part 3)

Population	South India	Indus Valley	Chinese	Southeast Asian	Mongolian	Manchurian	Oceanian	Baltic-Urals	Other
Asur Jharkand India	84.8%	-	2.7%	11.6%	-	-	0.8%	-	-
Bhunjia India	78.9%	-	-	20.8%	-	-	-	-	0.3%
Bonda Orissa India	64.4%	-	1.8%	32.7%	-	-	0.8%	-	0.4%
Brahmin Uttaranchal India	39.6%	29.7%	8.0%	-	11.4%	10.1%	-	-	1.1%
Dhurwa India	81.5%	-	1.1%	17.4%	-	-	-	-	-
Gadaba Orissa India	67.5%	-	-	29.8%	-	-	2.2%	-	0.5%
Garo Meghalaya India	17.6%	-	55.2%	14.5%	6.6%	3.9%	0.6%	-	1.6%
Gond India	96.4%	-	-	2.3%	-	-	1.3%	-	-
Ho Bihar India	75.1%	-	1.7%	21.2%	-	-	2.1%	-	-
Juang Orissa India	65.0%	-	-	33.5%	-	-	1.5%	-	-
Kharia Chattishgarh India	69.1%	-	5.7%	21.8%	-	-	3.0%	-	0.4%
Khasi Meghalaya India	38.9%	-	35.5%	20.3%	2.4%	-	0.8%	-	2.1%
Malayan India	94.6%	-	-	-	-	-	4.2%	-	1.2%
Mawasi India	80.0%	-	1.0%	16.5%	-	-	2.5%	-	-
Nepal	38.8%	33.2%	11.4%	-	4.7%	6.2%	-	3.5%	2.2%
Nihali India	94.5%	-	-	4.8%	-	-	0.7%	-	-
Paniya India	92.4%	-	-	-	-	2.4%	4.8%	-	0.4%
Pulliyar India	93.8%	-	-	2.1%	-	-	3.8%	-	0.2%
Santhal Jharkand India	81.3%	-	-	14.9%	-	-	3.0%	-	0.9%
Savara Orissa India	71.8%	-	-	24.0%	-	-	4.2%	-	-